

As you can see in the George architectural drawing below; the hotel building is **9 storeys** from the public waterfront path and **124.4 ft tall** from sea level.

**9 STOREYS**

(124.4 ft)

Roof (13.6ft) →

9 (11.8 ft) →

8 (10.8 ft) →

7 (10.8 ft) →

6 (10.8 ft) →

5 (10.8 ft) →

4 (10.8 ft) →

3 (22 ft) →

2 (11.6 ½ ft) →

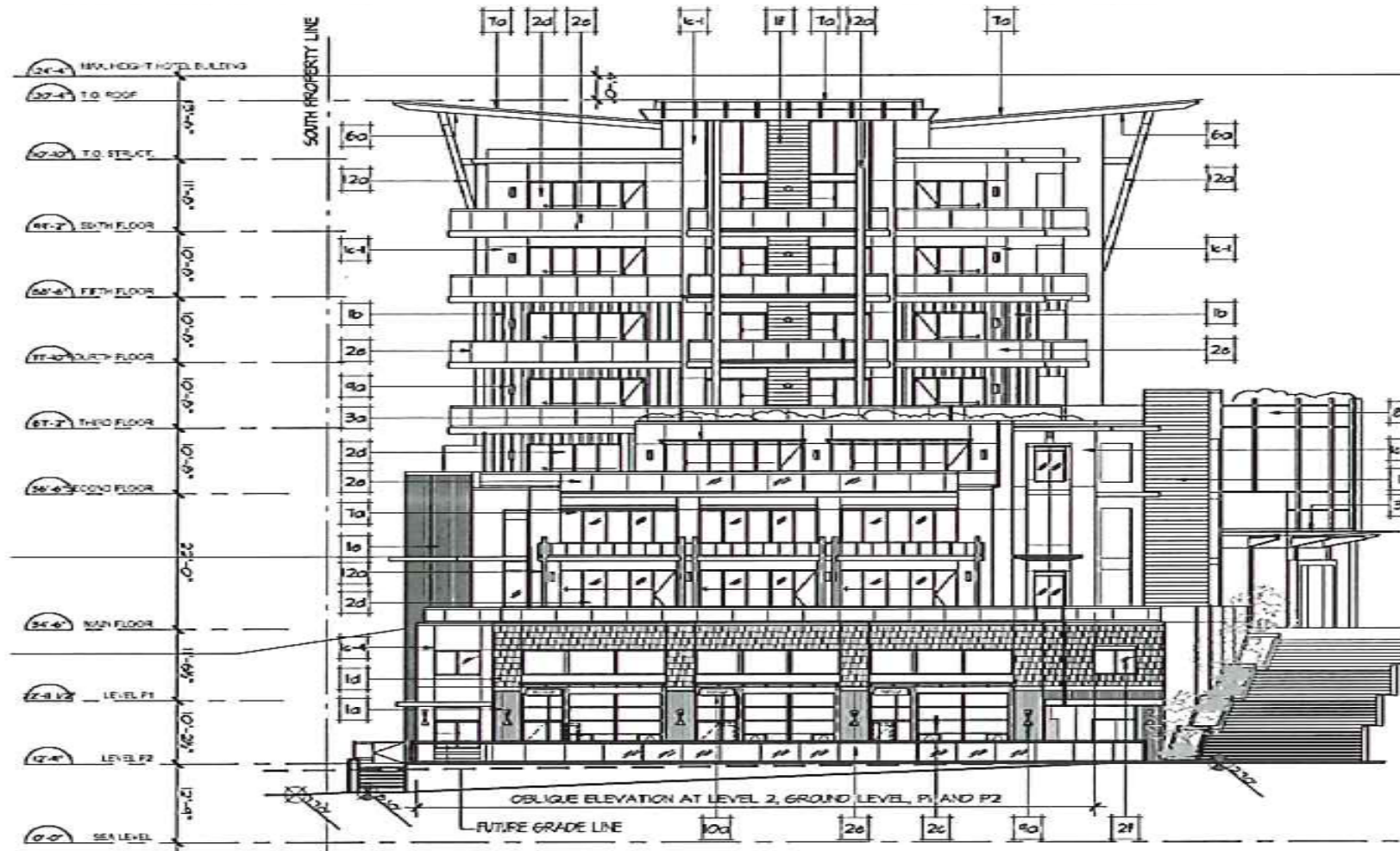
1 (10.2 ½ ft) →

Foundations

(12.9 FT) →

**SEA LEVEL**

(0 datum)



**HOTEL - EAST ELEVATION FROM SEAWALK**  
SCALE: 1/64" = 1'-0"

Image taken from the Town of Gibsons Website – [The George development application](#):